



NORMATIVA TECNICA PER LA GESTIONE DEGLI  
INTERVENTI DI MANUTENZIONE, RISTRUTTURAZIONE,  
CONSERVAZIONE E AMPLIAMENTO DELLE TOMBE DI  
FAMIGLIA

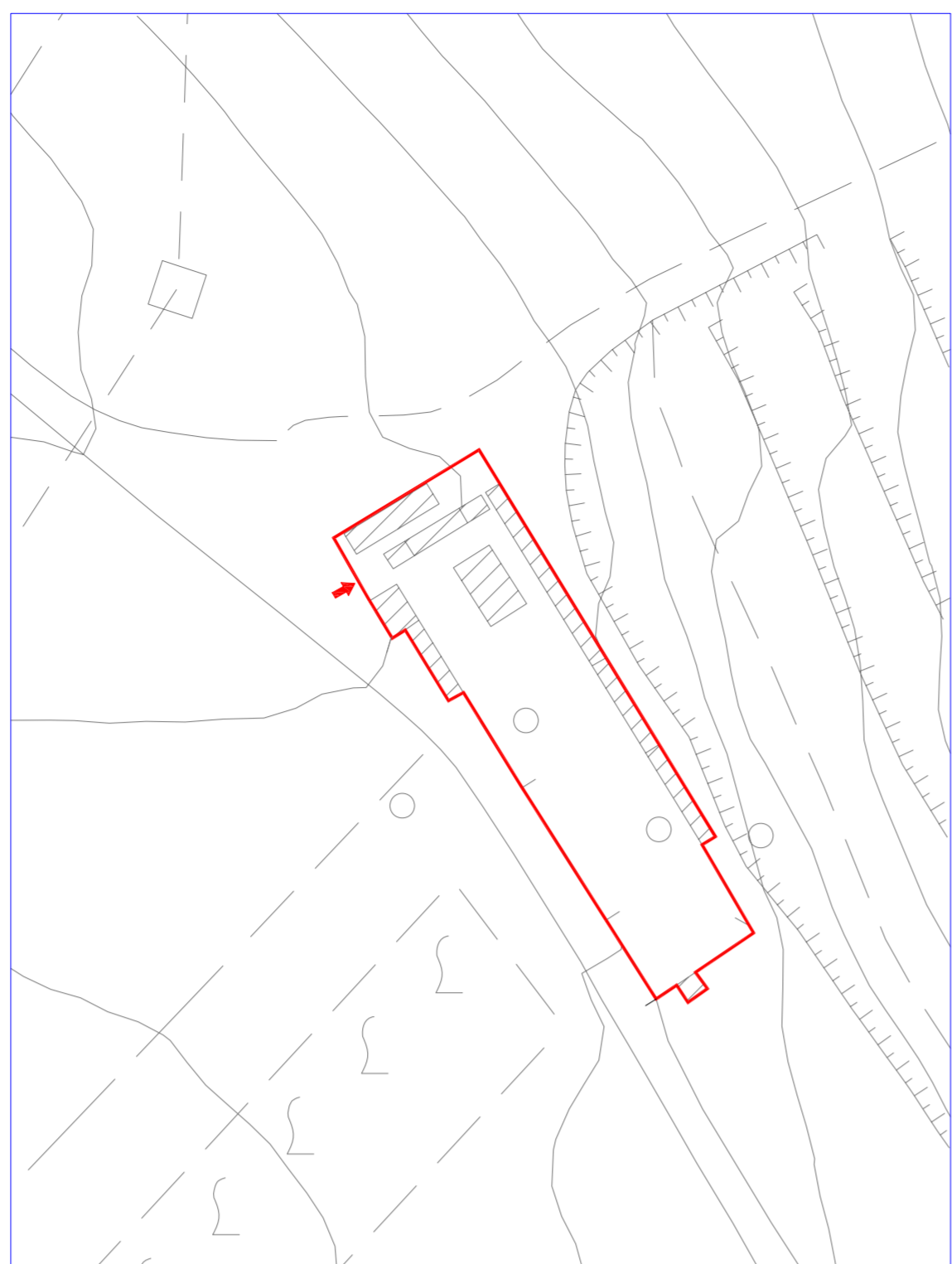
CIMITERI FRAZIONALI

TAV.

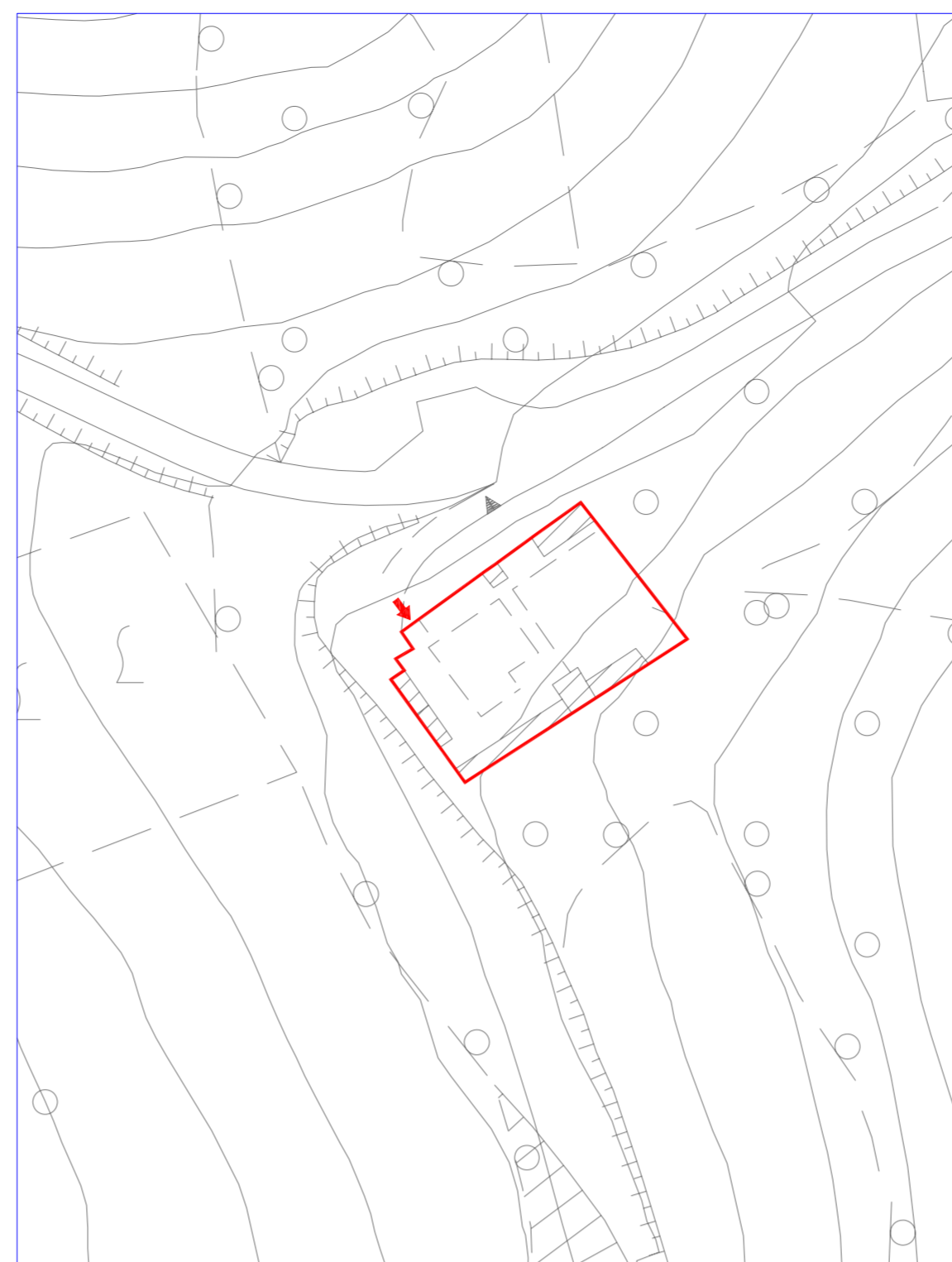
05

SCALA 1:1000

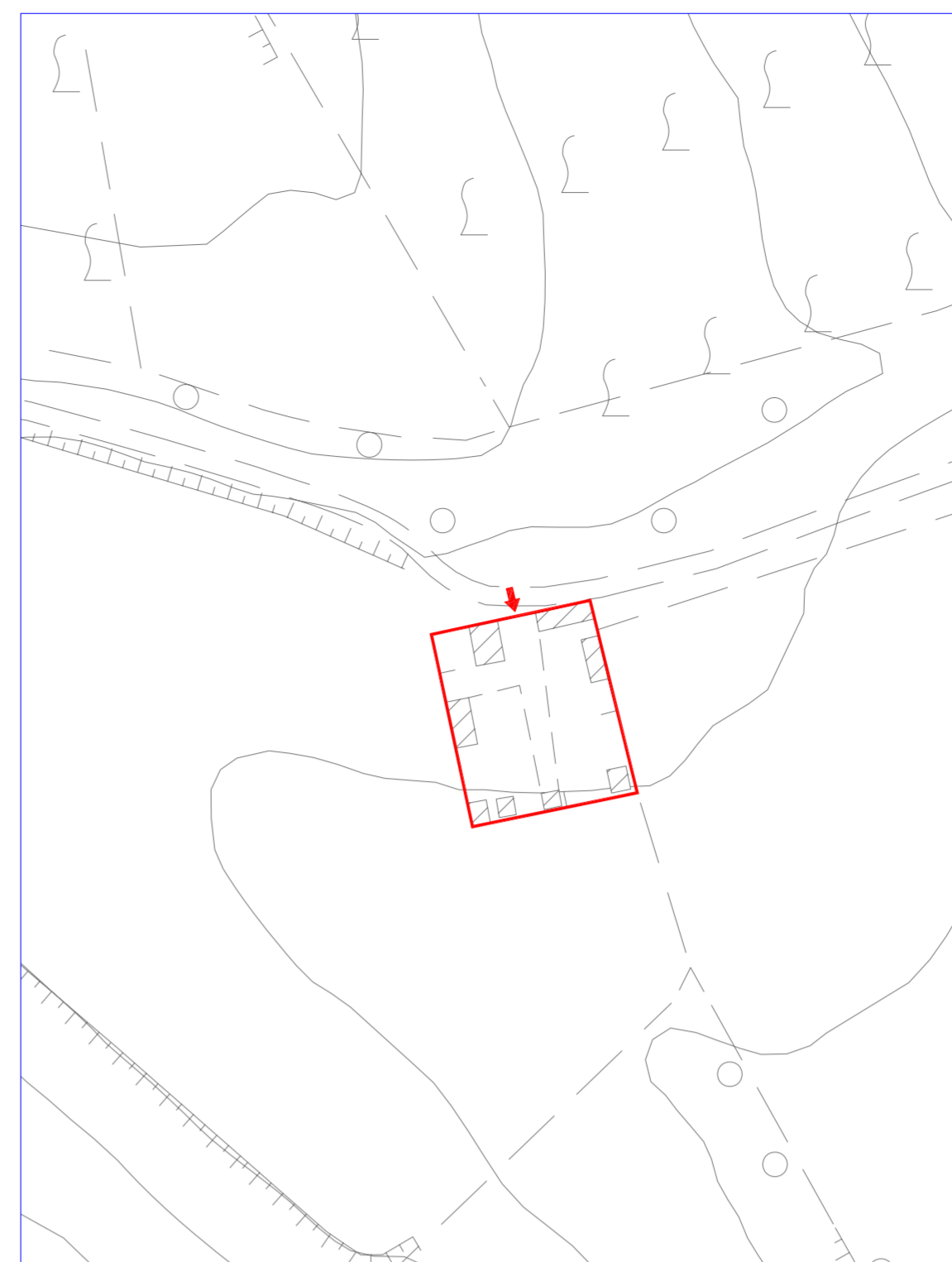
IL SINDACO: Sig. Fabio STURANI  
 L'ASSESSORE LL.PP.: Dott. Sandro SIMONETTI  
 DIRETTORE DI AREA: Ing. Carlo GALEAZZI  
 PROGETTISTA: Arch. Maurizio AGOSTINELLI  
 COLLABORATORI: Arch. Silvia PANFIGHI (inc. est.)  
 Geom. Gabriele DURAZZI  
 Dott.ssa Daniela MARSIGLIANI  
 Sig. ra Concetta CONTINI  
 Geom. Yuri BIAGIOLI  
 Geom. Simone BONCI  
 Dis. Marco MONTESI (inc. est.)  
 Ing. Andrea POLLONI (inc. est.)  
 Geom. Andrea Fabio MASSACESI  
 Dott.ssa Beatrice HONORATI  
 Dott.ssa Marinella MONTI  
 Arch. Giovanna SALMONI  
 (inc. est. per area monumentale)



Candia - Tav. 05.1.a



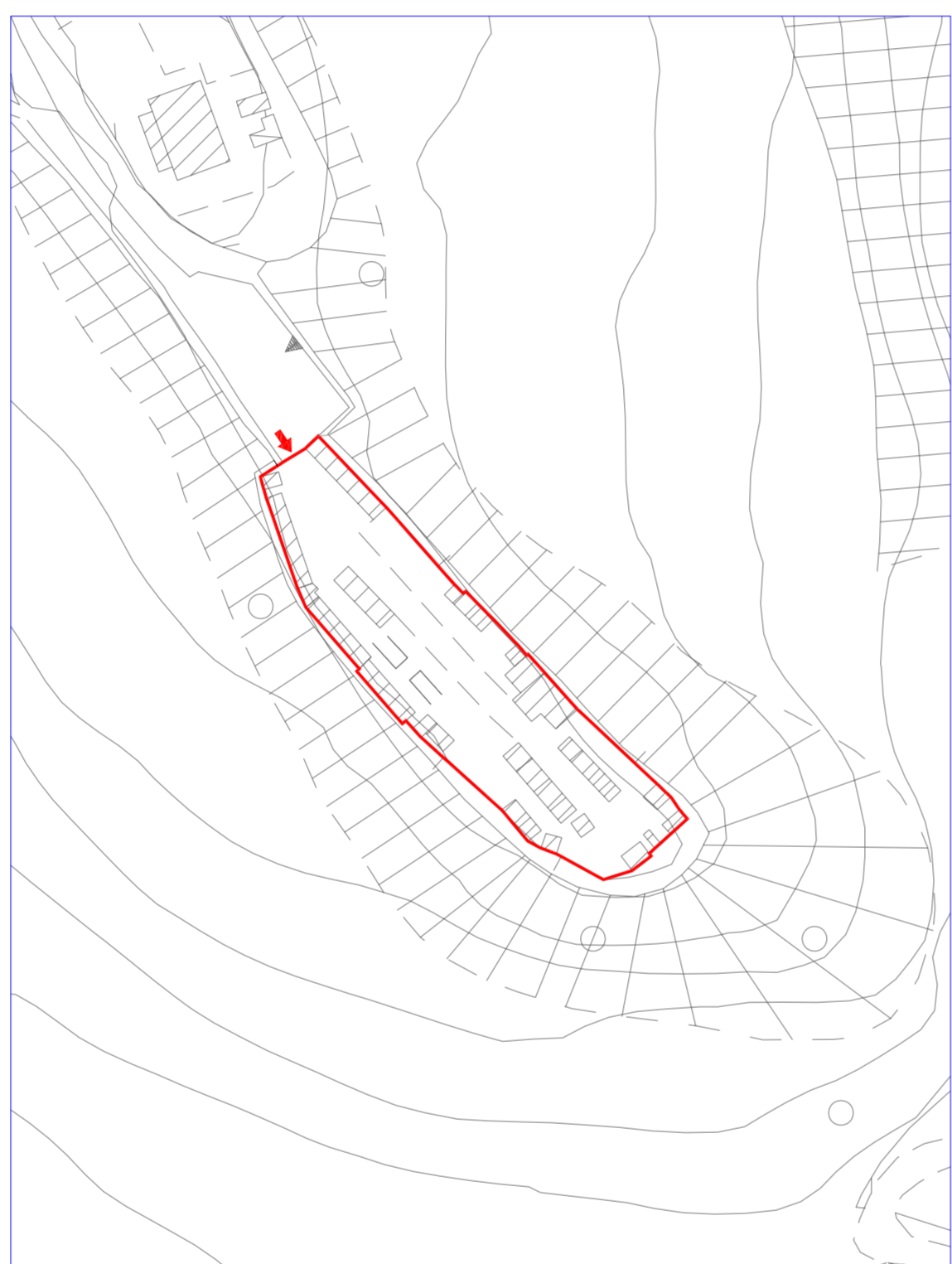
Gallignano - Tav. 05.2.a



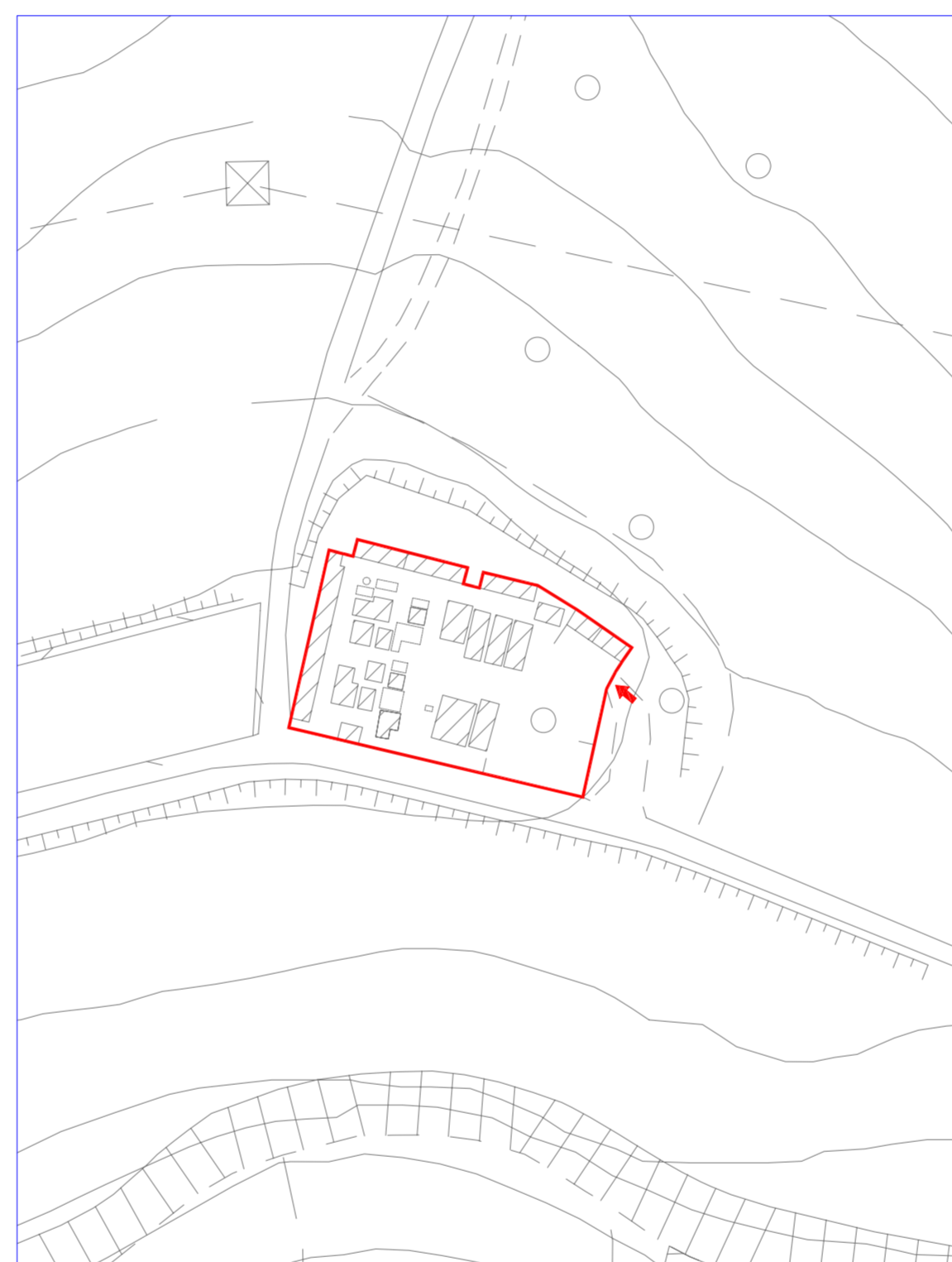
Massignano - Tav. 05.3.a



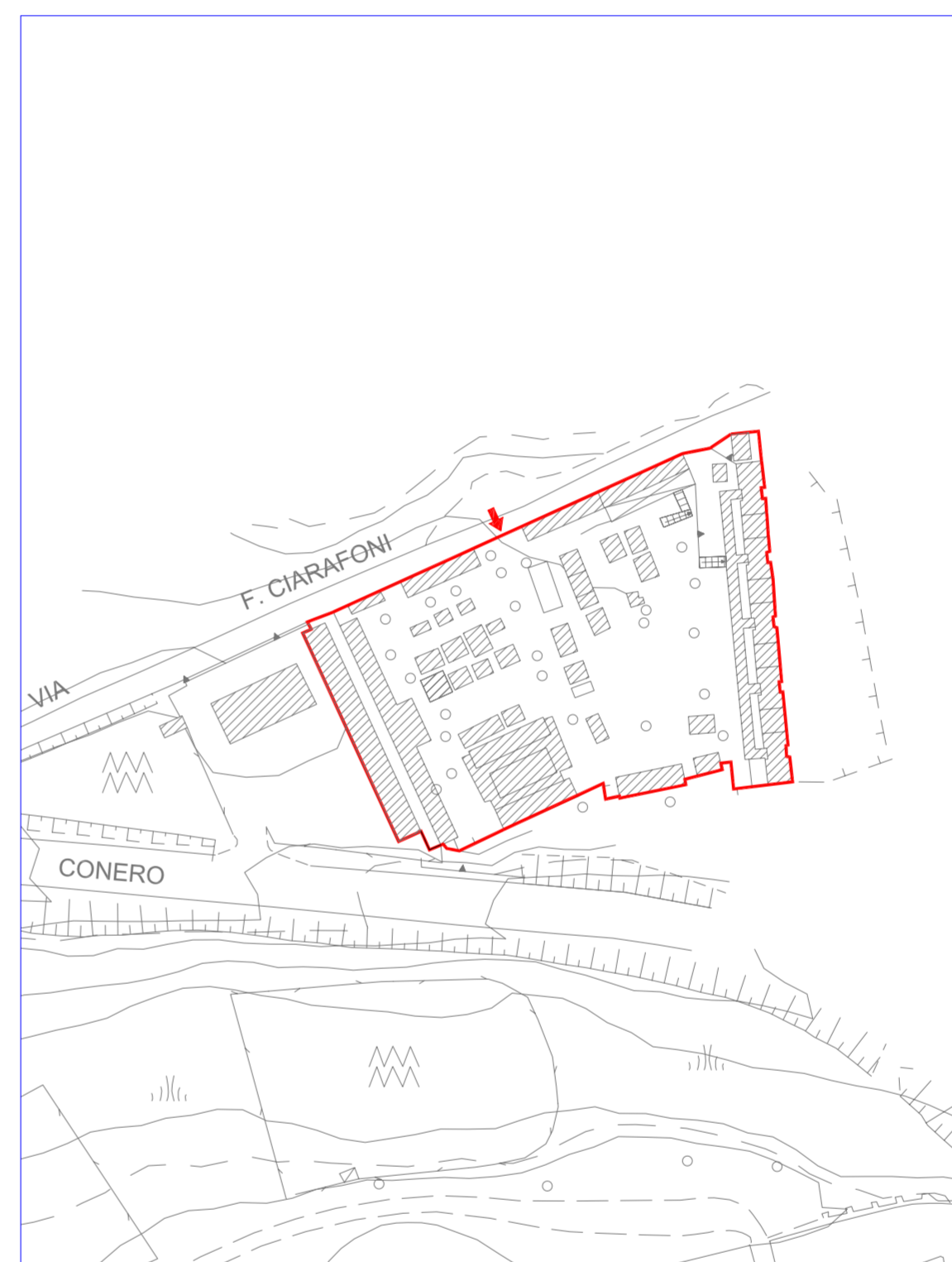
Montacuto - Tav. 05.4.a



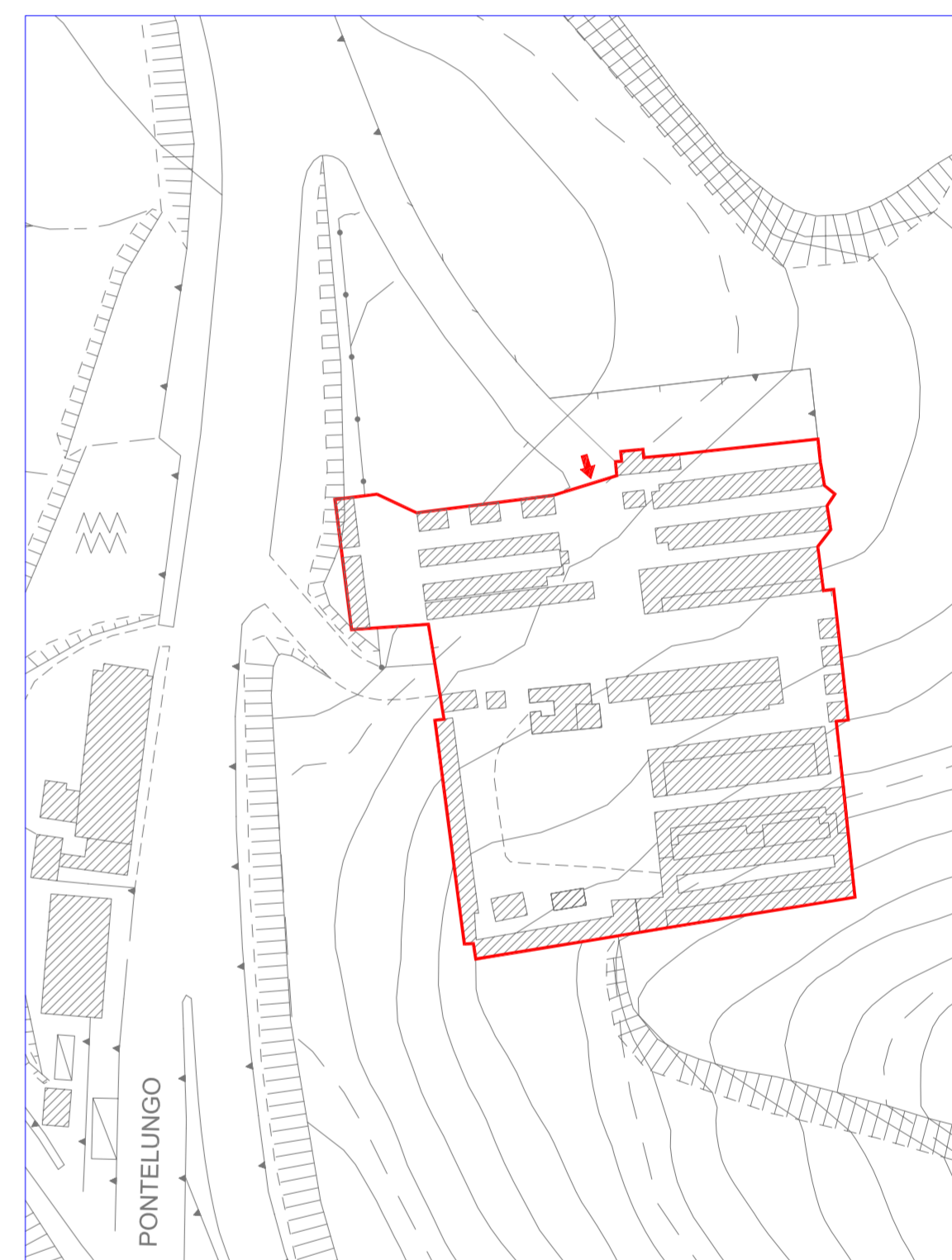
Montesicuro - Tav. 05.5.a



Paterno - Tav. 05.6.a



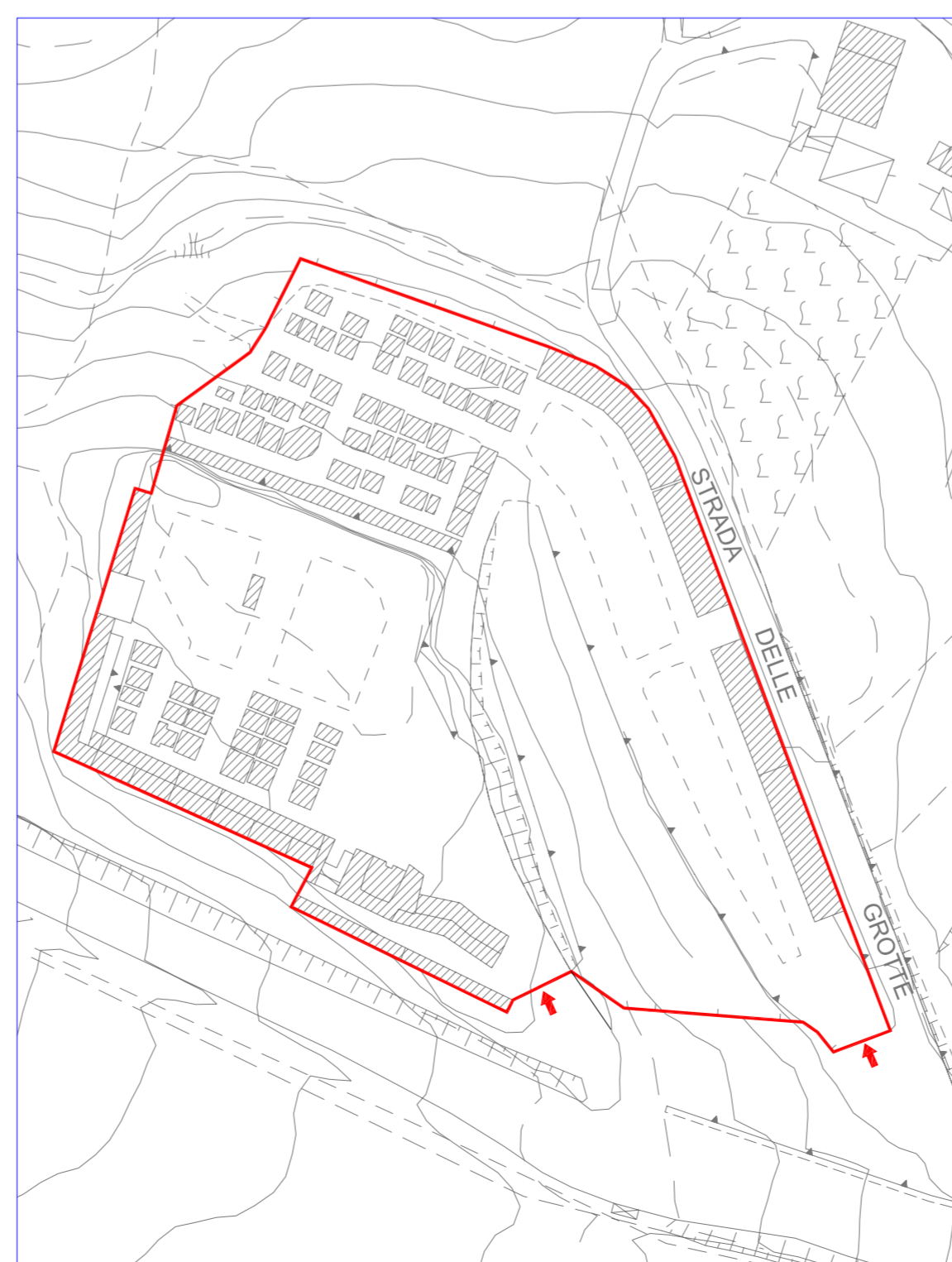
Pietralacroce - Tav. 05.7.a



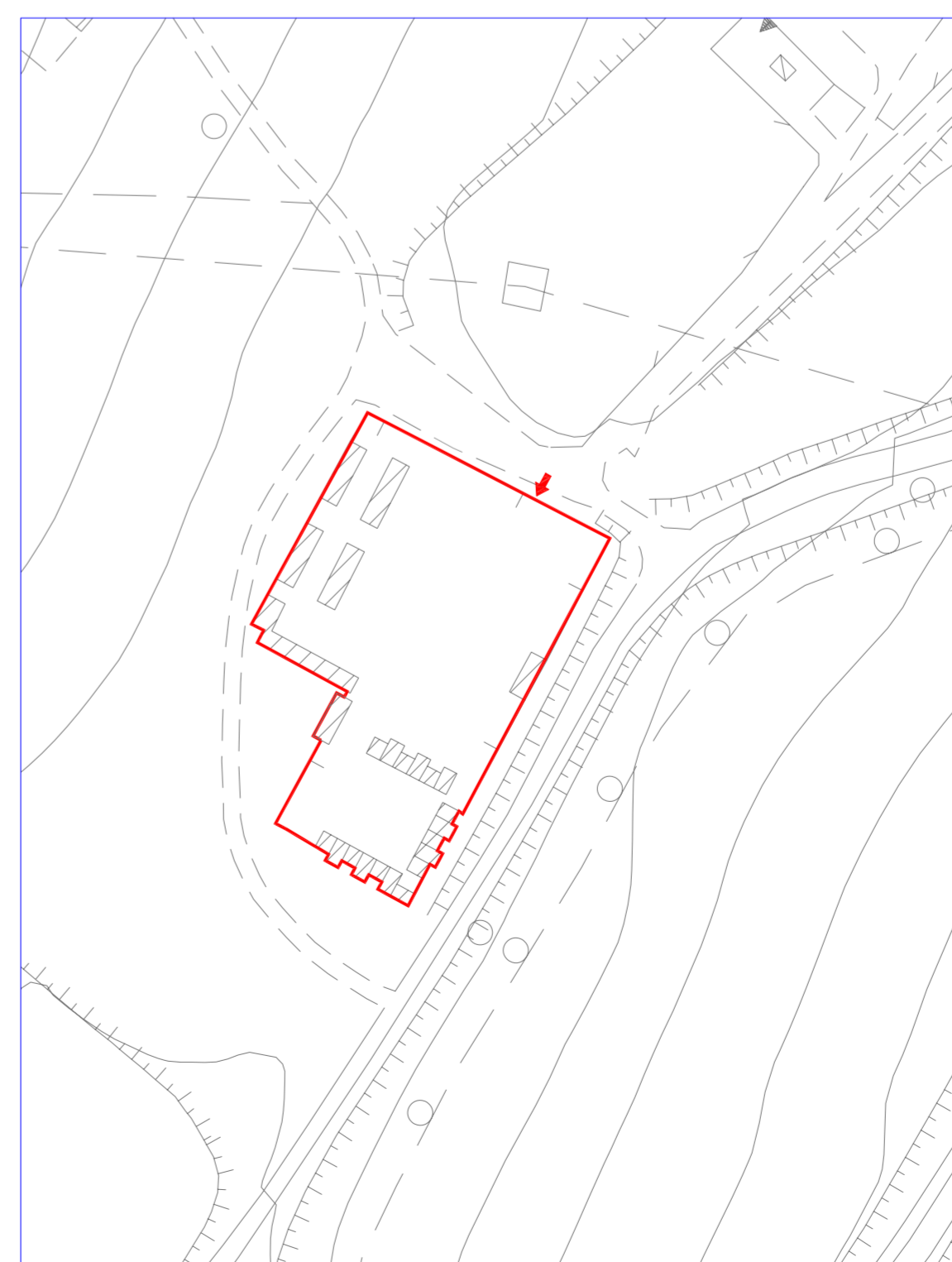
Pinocchio - Tav. 05.8.a



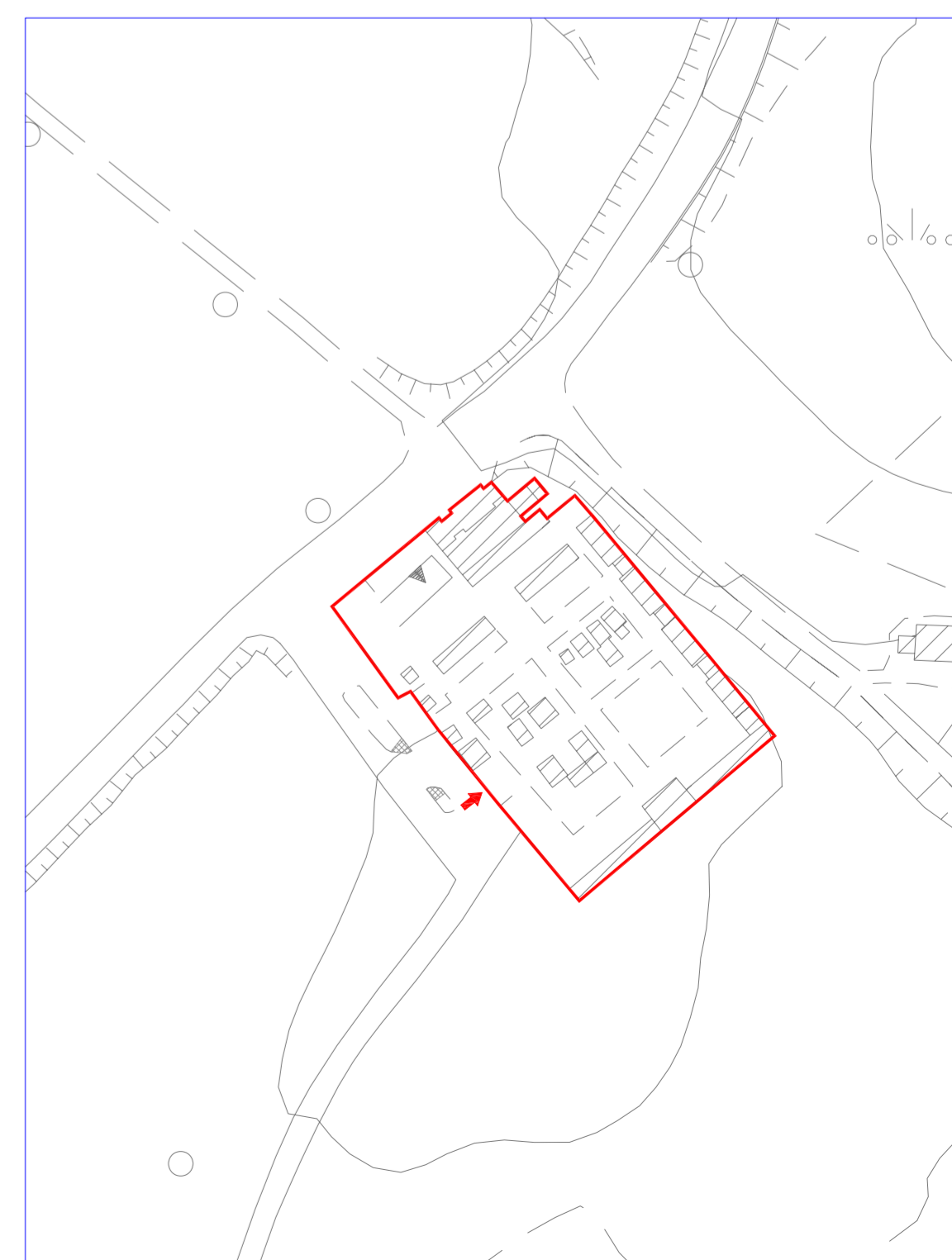
Poggio - Tav. 05.9.a



Posatora - Tav. 05.10.a



Sappanico - Tav. 05.11.a



Varano - Tav. 05.12.a