

COMUNE DI ANCONA

P.P.E. AREA APL15 EX VIGNA MARABOTTO

OGGETTO: PROGETTO PLANOVOLUMETRICO

PROPRIETA': LE VIGNE IMMOBILIARE SRL
VIA PASTORE 17, ANCONA

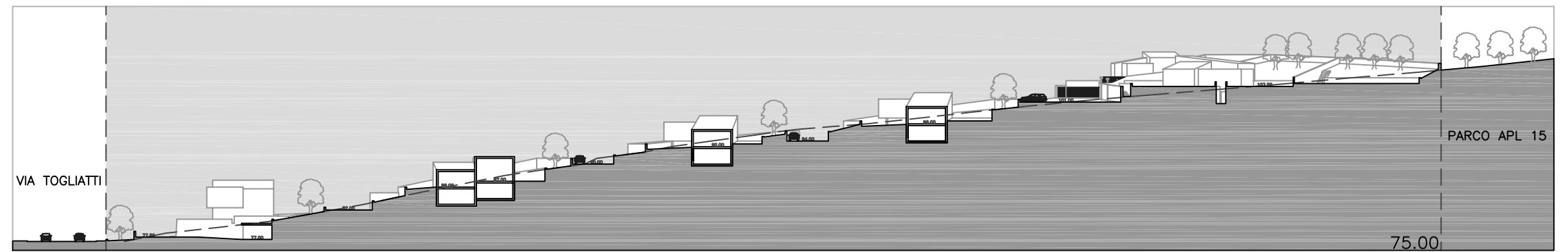
TAVOLA 4 PROFILI ALTIMETRICI INDICATIVI SCALA 1:500

MARZO 2004

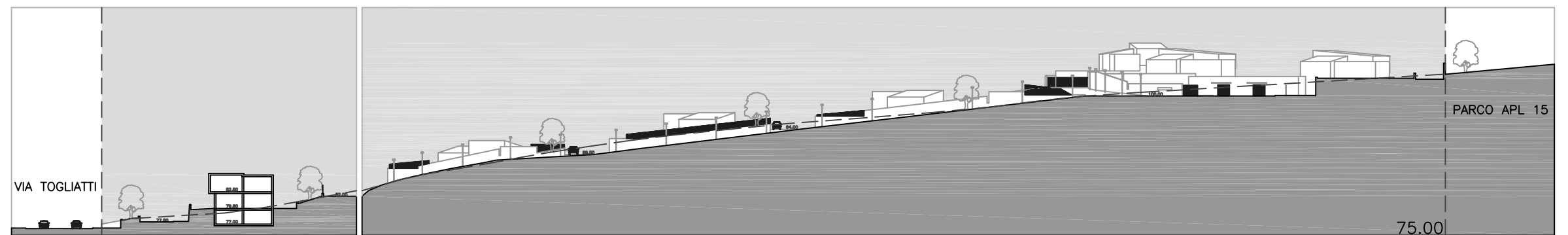
PROGETTISTI:

STUDIO POLENTA TECCO
ARCHITETTI ASSOCIATI

60131 ANCONA VIA PASTORE 17 - (071) 2867541 COD. FISC. E PART. IVA 01473540423

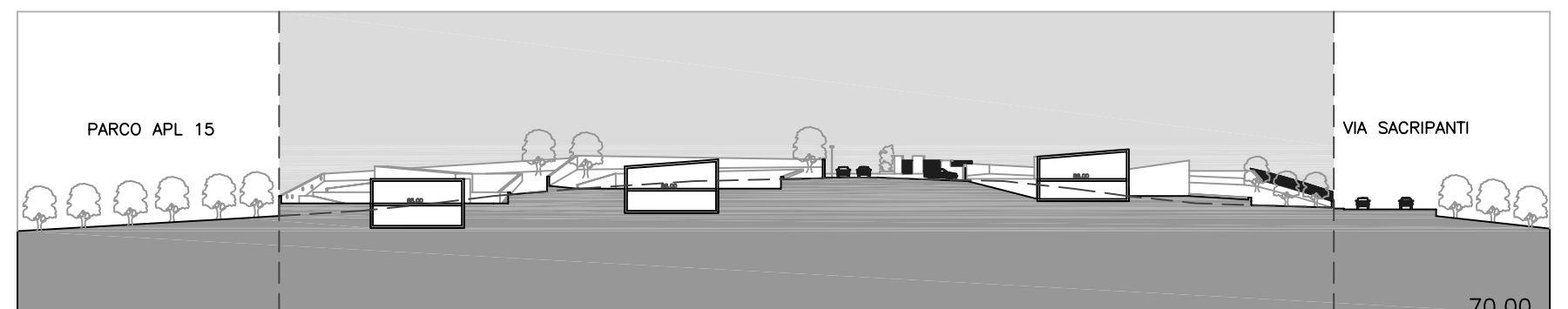
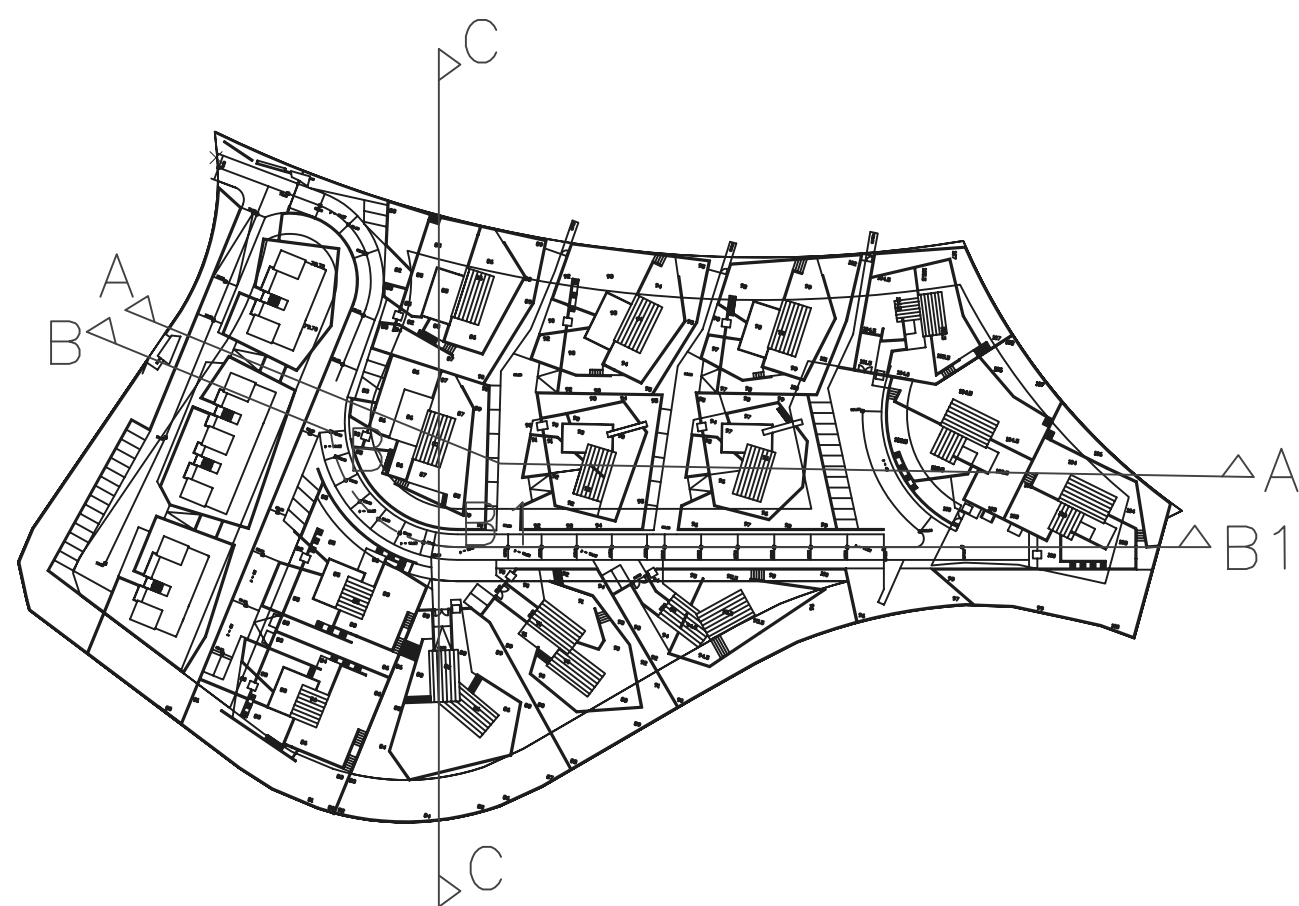


PROFILO A-A



PROFILO B-B

PROFILO B1-B1



PROFILO C-C